



SHEFFIELD INTERNATIONAL CONCERT SEASON 2026/27

Classical Music at Sheffield City Hall



Sheffield City Hall

Join world-class orchestras, soloists and conductors for a celebration of classical music. Bringing to life unforgettable, powerful and spine-tingling masterpieces.



Welcome	5
Sheffield International Concert Season 2026/27	6
Friday 25 th September, 7pm Hallé Orchestra	8
Friday 23 rd October, 7pm Hallé Orchestra	9
Thursday 19 th November, 7pm Stuttgart Philharmonic	10
Saturday 5 th December, 7pm Manchester Camerata Sheffield Philharmonic Chorus	11
Saturday 12 th December, 2.30pm Black Dyke Band Sheffield Philharmonic Chorus Sheffield Youth Choirs	12
Thursday 28 th January, 7pm Royal Northern Sinfonia	13
Saturday 20 th February, 7pm Hallé Orchestra	14
Saturday 13 th March, 7pm A Night at the Oscars with the Hallé Orchestra	15
Friday 2 nd April, 7pm Taiwan Philharmonic	16
Thursday 29 th April, 7pm Hallé Orchestra	17
Thursday 27 th May, 7pm Czech National Symphony Orchestra	18
Saturday 19 th June, 7pm Hallé Orchestra Sheffield Philharmonic Chorus Hallé Children's Choir	19
Season Tickets and Flexible Tickets	20
Save money and secure your favourite seats!	20
Tickets	21
Getting Here	22
Access Information	22

Follow us on

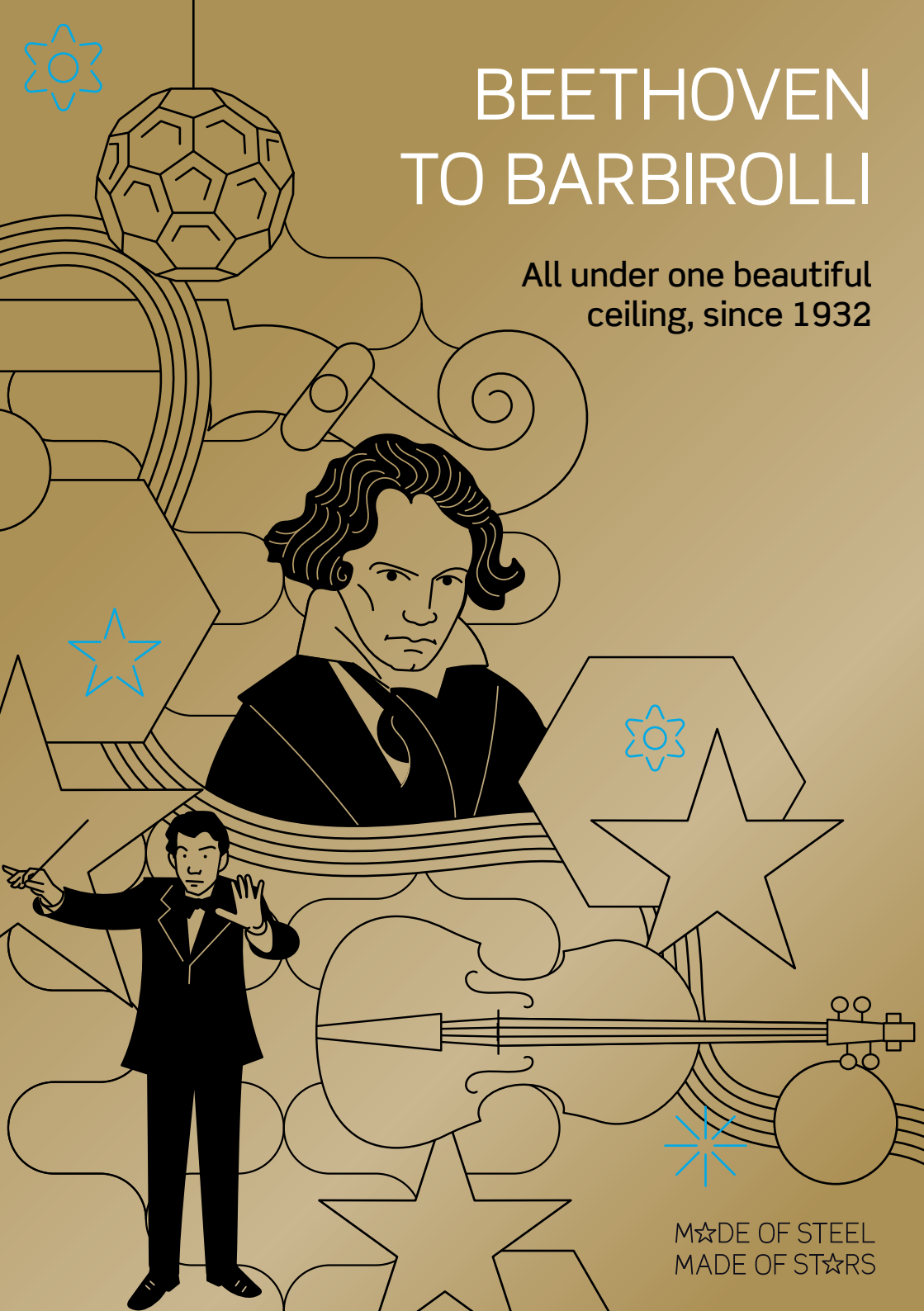
 @sheffcityhall

 @sheffieldcityhall

or join our classical mailing list at
www.sheffieldcityhall.co.uk

BEETHOVEN TO BARBIROLLI

All under one beautiful
ceiling, since 1932



M☆DE OF STEEL
MADE OF ST☆RS



Welcome

Welcome to the 2026/27 Sheffield International Concert Season. Our heartfelt thanks goes out to you, our audience, for your continued and valued support, and for being a key part of Sheffield's cultural scene. Your engagement and interest allow us to attract world-class ensembles and star artists to appear in the Steel City.

In addition to six performances from our resident orchestra, the Hallé, this season showcases three international orchestras alongside two more intimate concerts by world-class chamber ensembles, and our annual festive celebration.

Opening in spectacular style with a fiery and vibrant programme by the Hallé Orchestra and its Principal Conductor & Artistic Advisor, Kahchun Wong, they return together in February, pairing spine-tingling works by Mahler and Rachmaninov. As part of Classical Sheffield's Classical Weekend festival, conductor, Stephen Bell and the Hallé add some Hollywood sparkle with *A Night at the Oscars*, and the Orchestra makes two further appearances featuring virtuosic violin soloists, Henning Kraggerud and Emily Davis. The season

closes with Orff's monumental cantata *Carmina Burana*, uniting the Hallé with a trio of spectacular soloists, the Sheffield Philharmonic Chorus and Hallé Children's Choir.

International highlights include Jeneba Kanneh-Mason performing Mozart with the Stuttgart Philharmonic, the Taiwan Philharmonic's mighty space-themed celebration and the Czech National Symphony Orchestra returning with beloved Bohemian masterpieces. The Royal Northern Sinfonia marks the 200th anniversary of Beethoven's death with his Seventh Symphony and the Sheffield Philharmonic Chorus join Manchester Camerata and Laurence Cummings for a much-anticipated performance of Handel's classic oratorio *Messiah*. The Chorus also feature at Christmas, alongside the Black Dyke Band, Sheffield Youth Choirs and BBC Look North presenter and local treasure, Amy Garcia.

With rare gems, iconic favourites and fresh discoveries, we look forward to welcoming you to a season that promises unforgettable musical experiences.

Sheffield International Concert Season 2026/27

About the Concert Season

As a fundamental element of Sheffield City Hall's history since 1932, in this 94th year, the Sheffield International Concert Season continues to celebrate the incredible classical music scene in the Steel City. We are proud to welcome a range of the world's most dynamic orchestras, conductors and soloists to the heart of Sheffield City Centre.

What You Can Expect on Concert Evenings

As well as the thrilling music being performed, Sheffield City Hall concert evenings offer the full package for the ultimate classical music experience.

Seating is split over two levels: stalls and circle. Each tier will give you a different experience of a concert; from up close and personal on the outer circle, to an immersive experience in the stalls, each seat will allow you to be surrounded by some of the finest classical music ever composed. As a fully accessible building, lifts are located at either end of the foyer giving access to all floor levels.

The City Bar at Sheffield City Hall offers a relaxed setting to enjoy a drink and catch up with friends before the concert or at the interval. With a wide range of hot and cold beverages and a selection of wines, draught beers and spirits on offer, the City Bar is the ideal meeting place.

Sponsor a Concert & Hospitality Packages

Sponsor a specific concert of your choice for a birthday, celebration or anniversary or to remember a loved one. Entertain clients or take up business sponsorship opportunities throughout the season. Our Vincent Harris and Barbirolli Suites are available for pre-concert and interval drinks with bespoke catering and hospitality packages. For package details contact us at businessevents@sheffieldcityhall.co.uk

Free Pre-Concert Talks

6-6.30pm before every concert 'In Conversation' with Trisha Cooper and musical guests*.

To get in the know about the music and who will be performing it, BBC Broadcaster, Trisha Cooper, invites the conductor, soloist and others to talk about their lives and music.

This informal talk offers a unique look behind the scenes at the professional and private passions of the international artists performing throughout the season. The pre-concert talks always end in a Q&A session with our guests. Informative and entertaining, it's the best way to start a concert!

Pre-concert talks are FREE to concert ticket holders, and take place in the Oval Hall.

* Please note there will not be a pre-concert talk before the Christmas concert.



We are proud to be a partner of Classical Sheffield, a collaboration that brings together many of the brilliant venues, performers, organisers and groups that contribute to Sheffield's thriving classical music scene.

For comprehensive weekly listings, features, resources and much more, visit classicalsheffield.org.uk

Meet-a-Musician with the Hallé Orchestra

The Hallé Orchestra's 'Meet-a-Musician' programme is designed for primary school pupils in Key Stage 2 and is available to schools in Sheffield. Previous projects have taken place as far as Nottingham, Stoke and Manchester, focusing on popular pieces of orchestral music.

The project is designed for a full class of pupils and involves a visit from a Hallé player, who will demonstrate their instrument, tell the pupils about life as a professional musician, as well as help the children compose a short creative piece based on a work from the set orchestral repertoire. The children are also offered the opportunity to attend a concert with their parent/guardian. This project allows children to have an unforgettable first experience of orchestral music at the City Hall.



Trisha Cooper



Sheffield Music Academy exists to inspire excellence and we have been providing specialist training for young people aged 4-19 years old with outstanding musical ability, dedication and potential across the Sheffield City region and beyond for the last 15 years. Read more about what the Academy offers and check out upcoming concerts on the website: www.sheffieldmusicacademy.org



Kahchun Wong

Friday 25th September, 7pm

Hallé Orchestra

Kahchun Wong conductor

Sir Stephen Hough piano

LISZT Les préludes	16'
BEETHOVEN Piano Concerto No.5, "Emperor"	38'
<i>Interval</i>	
STRAVINSKY The Firebird: Suite (1945)	31'

Opening the Sheffield International Concert Season with a bang, the Hallé Orchestra returns with its widely-acclaimed Principal Conductor, Kahchun Wong, now in his third season at the helm. The concert begins with Liszt's symphonic poem, *Les préludes*, which erupts into a sumptuous melody after its tentative opening, and closes with Stravinsky's dazzling *Firebird Suite*, a work alive with colour, rhythmic drive and fairy-tale melodrama. To complete this brilliant programme, Sir Stephen Hough joins our resident orchestra for Beethoven's majestic "Emperor" Piano Concerto, widely considered by many fans to be his best with its pure, dreamy second movement and utterly joyous finale. Don't miss the start of this classical adventure.

PRE-CONCERT TALK 6pm

Tickets: £35.50, £33.50, £27.00 **Student and Under 18's £9**

The prices shown include a service charge. Purchases may be subject to handling and postage fees.

Friday 23rd October, 7pm

Hallé Orchestra

Nicholas Collon conductor

Emily Davis violin

RAVEL (ORCH. COLIN MATTHEWS)

Three Songs Without Words 8'

SZYMANOWSKI Violin Concerto No.2 23'

Interval

RACHMANINOV Symphony No.3 39'

Known for his desire to connect people through the power of orchestral theatre, conductor Nicholas Collon joins the Hallé Orchestra and guides us through a programme that dreams of far-off lands. Szymanowski's rhapsodic and ecstatic Second Violin Concerto pays homage to the folk music of the Tatra mountains in the composer's native Poland, brought to life with breathtaking virtuosity by one of the Hallé Orchestra's Leaders, Emily Davis. Rachmaninov's brooding Third Symphony, written whilst in exile in Switzerland, yearns for the Russian composer's lost homeland. Fleeting and fantastical, Colin Matthews' luminous orchestrations bring Ravel's enchanting miniature worlds to life; glimpse a wintry city ravaged by the winds of change, a shimmering dreamscape and a merry Christmas scene.

PRE-CONCERT TALK 6pm

Tickets: £33.50, £30.95, £24.95

Student and Under 18's £9

The prices shown include a service charge.
Purchases may be subject to handling and postage fees.



Nicholas Collon

Photo: © Jim Hinson



Photo: Johanna-Berghorn © Sony Music Entertainment

Jeneba Kanneh-Mason

Thursday 19th November, 7pm

Stuttgart Philharmonic

Mariano Chiacchiarini conductor

Jeneba Kanneh-Mason piano

MENDELSSOHN Hebrides Overture (Fingal's Cave)	11'
MOZART Piano Concerto No.20, K466	30'
<i>Interval</i>	
SIBELIUS Symphony No.5	32'

The Stuttgart Philharmonic, here making its debut, is joined by Mariano Chiacchiarini, one of the most compelling conductors of his generation. Come and discover, or simply immerse yourself in, some familiar classics in this hugely evocative concert, starting with Mendelssohn's striking overture. The composer sketched its opening theme on a postcard whilst visiting the echoing sea cave on Staffa and the final work perfectly captures the moody atmosphere of the Scottish seascape. Sibelius' Fifth Symphony is a musical depiction of an unfolding landscape: from the swooping horn calls of its opening, conjuring a slow sunrise over a vast Nordic horizon, to its theatrical ending with six massive chords, separated by silence. Performing one of Mozart's most celebrated piano concertos is Jeneba Kanneh-Mason, who makes a welcome return to Sheffield.

PRE-CONCERT TALK 6pm

Tickets: £35.50, £33.50, £27.00 **Student and Under 18's £9**

The prices shown include a service charge. Purchases may be subject to handling and postage fees.

Saturday 5th December, 7pm

Manchester Camerata Sheffield Philharmonic Chorus

Laurence Cummings conductor

Georgie Malcolm soprano

Dominic Mattos countertenor

Guy Elliott tenor

Peter Edge baritone

HANDEL Messiah

135'

The Sheffield Philharmonic Chorus makes its first appearance this season with a long-awaited performance of Handel's classic oratorio, *Messiah*. They join Manchester Camerata, a cast of star soloists and Laurence Cummings, a conductor that "matches Handel's energy and invention with unmistakable lyricism, generosity and dignity" (*The Guardian*). Handel's much-loved work has become a treasured part of the festive season for audiences of all ages. From the uplifting choruses to the tender arias, it tells a universal story of hope, reflection and elation through music that speaks directly to the heart. Whether this is a cherished annual tradition or your first time hearing the work live, this performance offers a chance to experience one of the most enduring and stirring masterpieces ever written.



PRE-CONCERT TALK 6pm

Tickets: £34.50, £32.50, £25.95 **Student and Under 18's £9**

The prices shown include a service charge. Purchases may be subject to handling and postage fees.

Saturday 12th December, 2.30pm

CHRISTMAS CONCERT

Black Dyke Band

Sheffield Philharmonic Chorus

Sheffield Youth Choirs

Amy Garcia presenter

Darius Battiwalla conductor

Nicholas Childs conductor

Join the Black Dyke Band, Sheffield Philharmonic Chorus and Sheffield Youth Choirs for this sparkling seasonal celebration as they come together for an afternoon filled with carols and audience singalongs. Take time out from the hustle and bustle of all the Christmas preparations; from shopping and wrapping, to decorating and card writing.

Presenter Amy Garcia is swapping the BBC *Look North* sofa for Sheffield City Hall's stage and she will guide us through all the festive favourites in this Christmas tradition like no other. The programme includes time-honoured pieces such as *O Holy Night*, *The Holly and the Ivy*, *Zither Carol* and *Christians Awake* as well as *Shepherd's Pipe Carol*, written by John Rutter, one of the most popular and beloved choral composers in recent times, and the ever uplifting *Sleigh Ride*, complete with entertaining percussion whipcracks!



Amy Garcia

Tickets: £35.50, £33.50, £27.00 Student and Under 18's £9

The prices shown include a service charge. Purchases may be subject to handling and postage fees.



Matilda Lloyd

Thursday 28th January, 7pm

Royal Northern Sinfonia

Kristian Sallinen conductor

Matilda Lloyd trumpet

STRAVINSKY Dances concertantes	19'
HUMMEL Trumpet Concerto	19'
<i>Interval</i>	
BEETHOVEN Symphony No.7	36'

Finnish conductor Kristian Sallinen, who exhibits a natural authority and charismatic flair on the podium, opens the Royal Northern Sinfonia's concert with Stravinsky's witty *Dances concertantes*, one of the composer's most vibrant neoclassical creations. Next up is Hummel's agile and lyrical Trumpet Concerto, a real showcase for "trumpeter extraordinaire" (*BBC Music Magazine*) Matilda Lloyd. After the interval, Beethoven's Seventh Symphony brings the evening to a thrilling close. Performed to commemorate the 200th anniversary of the composer's death, this joyful symphony reminds us why his music continues to inspire and unite audiences today.

PRE-CONCERT TALK 6pm

Tickets: £25.50, £24.50, £20.95 **Student and Under 18's £9**

The prices shown include a service charge. Purchases may be subject to handling and postage fees.

Saturday 20th February, 7pm

Hallé Orchestra

Kahchun Wong conductor

Alexei Volodin piano

RACHMANINOV

Rhapsody on a Theme of Paganini 22'

Interval

MAHLER Symphony No.5 68'

The Hallé Orchestra returns with Mahler's heady Fifth Symphony and Rachmaninov's wicked *Rhapsody on a Theme of Paganini*. The story goes that the 19th century violin virtuoso, Niccolò Paganini, sold his soul to Satan in exchange for his extraordinary talent. Rachmaninov's theme and variations on one of Paganini's compositions goes to prove that the devil really does have the best tunes. Russian pianist Alexei Volodin brings a galvanising vitality to this richly imaginative piece. After the interval, Mahler's Fifth Symphony takes centre stage. Beginning with a funeral march, this monumental work travels from a mood of hopelessness, through one of the composer's most beloved slow movements, to its unforgettably jubilant conclusion. Mahler specialist Kahchun Wong will bring his signature energy to this performance.

PRE-CONCERT TALK 6pm

Tickets: £33.50, £30.95, £24.95

Student and Under 18's £9

The prices shown include a service charge.
Purchases may be subject to handling and postage fees.



Kahchun Wong

Photo: © Drew Forsyth

Saturday 13th March, 7pm

A Night at the Oscars with the Hallé Orchestra

Part of Classical Weekend 2027

Stephen Bell conductor

Akash Parekar sitar

Photo: © Andres Poveda



As the lights go down, be swept away by blockbuster music from a hundred years of cinema. And the nominations for most memorable tunes are...

R. STRAUSS 2001: A Space Odyssey

MOROSS The Big Country

ARLEN ARR PAUL CAMBELL Somewhere Over the Rainbow

HERRMANN Taxi Driver

MANCINI arr. **BATEMAN** Breakfast at Tiffany's

KORNGOLD The Sea Hawk

MORRICONE Cinema Paradiso

RÓZSA Parade of the Charioteers from Ben-Hur

A. R. RAHMAN Slumdog Millionaire

GIACCHINO Up

JOHN POWELL How to Train Your Dragon

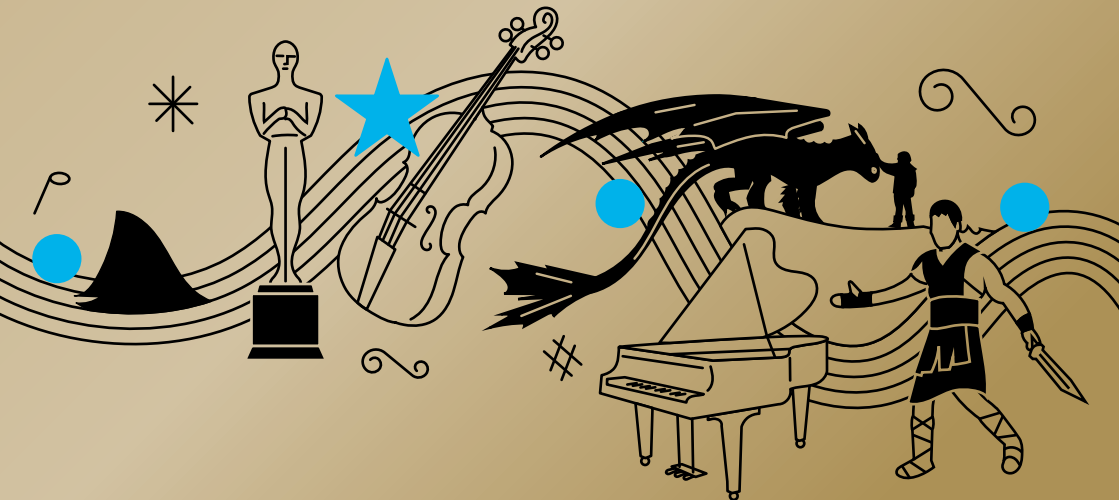
JOHN WILLIAMS Jaws

JOHN WILLIAMS Catch Me If You Can

BARRY Out of Africa/Dances with Wolves

HANS ZIMMER Interstellar

HANS ZIMMER Gladiator



PRE-CONCERT TALK 6pm

Tickets: £25.50, £24.50, £20.95 Student and Under 18's £9

The prices shown include a service charge. Purchases may be subject to handling and postage fees.



Jun Märkl

Friday 2nd April, 7pm

Taiwan Philharmonic

Jun Märkl conductor

JOHN ADAMS Short Ride in a Fast Machine	5'
R. STRAUSS Also sprach Zarathustra	33'
<i>Interval</i>	
HOLST The Planets: Mars and Jupiter	14'
JOHN WILLIAMS Star Wars: Suite	24'

Prepare to blast off into space with the Taiwan Philharmonic, under the direction of experienced Mission Control Commander, Jun Märkl! Colliding with NASA's planned launch of Artemis III and the 50th anniversary of the release of George Lucas' iconic film, *Star Wars*, the voyage begins with the irresistibly energetic *Short Ride in a Fast Machine* by American composer John Adams. Richard Strauss' dramatic tone poem, *Also sprach Zarathustra*, became famous after Stanley Kubrick chose to use its opening to represent the sunrise from space in his classic film, *2001: A Space Odyssey*. Holst's characteristic portraits of two planets, *Mars* and *Jupiter*, lead seamlessly into music from *Star Wars*, written by the legendary film composer, John Williams. Perfect for classical music fans and first-time concertgoers alike, this accessible programme celebrates the orchestra at its most cinematic and spine-tingling.

PRE-CONCERT TALK 6pm

Tickets: £35.50, £33.50, £27.00 **Student and Under 18's £9**

The prices shown include a service charge. Purchases may be subject to handling and postage fees.

Thursday 29th April, 7pm

Hallé Orchestra

Lidiya Yankovskaya conductor

Henning Kraggerud violin

MISSY MAZZOLI Sinfonia (for Orbiting Spheres) 9'

BRUCH Violin Concerto 24'

Interval

TCHAIKOVSKY Symphony No.4 44'

For this concert, the Hallé Orchestra is joined by Lidiya Yankovskaya, a conductor with an unshakeable sense that classical music is a living, responsive art form. She opens the concert with Missy Mazzoli's looping, twisting *Sinfonia (for Orbiting Spheres)*. It is music that churns and rolls, inches closer to the listener then leaps away at breakneck speed, flinging itself recklessly into space. Henning Kraggerud, the outstanding Norwegian violinist, showcases his skills in Bruch's ever-popular Violin Concerto, with its romantic second movement and glorious finale. Born out of crisis, Tchaikovsky's Fourth Symphony was written during one of the darkest periods of his life – a disastrous marriage, a nervous breakdown and near-suicidal despair. Reflecting the composer's inner turmoil, the music delivers drama and drive as it journeys from emotional struggle to blazing affirmation.

Photo: © Nikolaj Lund



PRE-CONCERT TALK 6pm

Tickets: £33.50, £30.95, £24.95 **Student and Under 18's £9**

The prices shown include a service charge. Purchases may be subject to handling and postage fees.

Henning Kraggerud

Thursday 27th May, 7pm

Czech National Symphony Orchestra

Steven Mercurio conductor

Mark Bebbington piano

SMETANA The Bartered Bride: Overture	7'
RACHMANINOV Piano Concerto No.2	33'
<i>Interval</i>	
SMETANA Má vlast: Vltava	12'
DVOŘÁK Symphony No.8	34'

The Czech National Symphony Orchestra returns with its Music Director, the internationally acclaimed conductor Steven Mercurio, bringing a programme that celebrates the spirit of Bohemia. Smetana opens each half of the concert: first, the sparkling overture to his opera *The Bartered Bride* and then his vivid musical picture immortalizing the Vltava river that flows through Prague. Bursting with melodies, Dvořák's cheerful Eighth Symphony evokes birdsong, rustic folk dances and the open landscapes and natural surroundings of Vysoká, a village in central Bohemia where the composer wrote the work. To complete the programme is Rachmaninov's mighty Second Piano Concerto, treasured for its sweeping lyricism, rich harmonies and heartfelt emotion. To take the solo role is Mark Bebbington, fast emerging as one of Britain's most distinctive and innovative pianists.

PRE-CONCERT TALK 6pm

Tickets: £34.50, £32.50, £25.95

Student and Under 18's £9

The prices shown include a service charge.
Purchases may be subject to handling and postage fees.



Mark Bebbington



Hallé Orchestra

Saturday 19th June, 7pm

Hallé Orchestra

Sheffield Philharmonic Chorus

Hallé Children's Choir

Matthew Hamilton conductor

Christina Gansch soprano

Anthony Gregory tenor

David Stout baritone

MENDELSSOHN

A Midsummer Night's Dream: selection 20'

Interval

ORFF Carmina Burana 65'

The season draws to an exhilarating finish with one of the most instantly recognisable choral works ever written – Carl Orff's *Carmina Burana*. From thunderous choruses to moments of quiet reflection, the powerful rhythms and unforgettable melodies will be performed by the massed forces of the Hallé Orchestra, Sheffield Philharmonic Chorus, Hallé Children's Choir and a cast of fantastic soloists, all under the direction of the inspirational conductor, Matthew Hamilton.

Before this epic work, Mendelssohn captures the magic and humour of Shakespeare's *A Midsummer Night's Dream*.

PRE-CONCERT TALK 6pm

Tickets: £33.50, £30.95, £24.95 **Student and Under 18's £9**

The prices shown include a service charge. Purchases may be subject to handling and postage fees.

Season Tickets and Flexible Tickets

Save money and secure your favourite seats!

12th Symphony – All 12 Concerts

Book all 12 concerts and **save 40%** on the ticket prices. The best way to see all the amazing music and select your preferred seat in the hall. With a season ticket you get the best value for money and access to season ticket only events.

6th Symphony – Choose 6 Concerts

Book half of the season and **save 15%** on the ticket prices. Have the flexibility to piece together your own season and choose your concerts but still make a great saving. You can guarantee your seat throughout these concerts and get great savings while having the pick of the concerts and tailoring the season to suit you. (The six concert season ticket excludes the Christmas Concert).

The prices depend on the position of your seat in the hall whether you choose the stalls or circle level. Season Tickets and Flexible Tickets are not available in conjunction with any other discount or concession tickets.

For single ticket prices see each concert page.

How to book

Book your season ticket in person at the City Hall Box Office or by calling the Season Ticket booking line on 0333 3211091 10am – 4pm. Email customerservices@sheffieldcityhall.co.uk

* Please note season ticket prices are only available when purchased together and cannot be applied retrospectively. Any additional tickets added onto a season ticket or flexible ticket will be charged at single ticket prices.



Tickets

Tickets for the Sheffield International Concert Season are available online at: www.sheffieldcityhall.co.uk/sheffield-international-concert-season and in person at the Sheffield City Hall Box Office.

Under 18 and student tickets are priced at just £9, giving young people a great opportunity to watch some of the world's finest musicians for an incredible price! These tickets cannot be posted and must be collected from the Box Office with valid ID for proof of age or student status. These concession tickets are not available with Season Ticket and Flexible Ticket discounts.



Safety & Security

The health and wellbeing of all our customers, staff and the events we host is our absolute priority at Sheffield City Hall. We therefore ask everyone attending a concert to respect fellow visitors and to be considerate to all other audience members. We continue to work with event organisers, promoters and the National Arenas Association on entry requirements to our venues and will update our advice as required. Our procedures will continue to evolve, be reviewed and updated should any guidance or law change. No bags larger than A3 size will be permitted into the venue. Please see our website for a full list of prohibited items.

Booking and Fulfilment Fees

The prices shown in this brochure include a service charge. At the time of going to print, bookings are subject to a transaction fee and may be dependant upon charges for the option selected whether posted, collected or print at home. Ask a member of the Box Office team or go to www.sheffieldcityhall.co.uk/box-office for more information.

Group bookings

If you would like to bring a large group or school trip to experience an unforgettable concert, visit the Box Office in person or contact us via the email below.

Tickets

www.sheffieldcityhall.co.uk

Box Office

customerservices@sheffieldcityhall.co.uk or complete the contact us form on our website

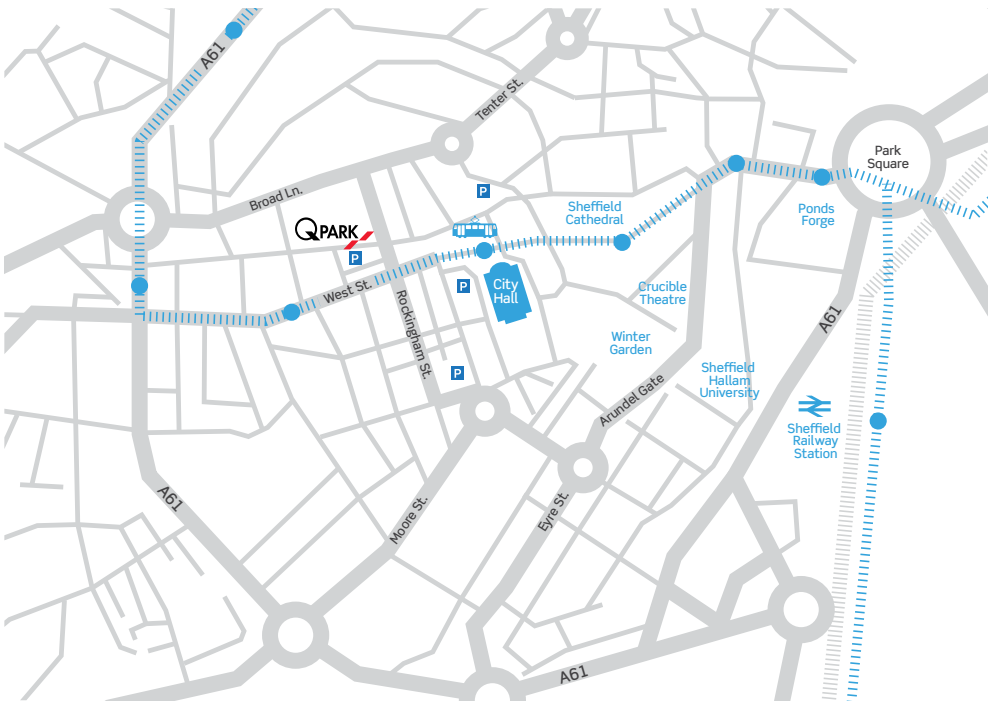
In Person Opening Times:

Monday - Friday 10.00am – 4.00pm.

For Bank Holiday opening times please check the venue website.



All artists, programmes and prices are correct at the time of going to press, but may be subject to change in the event of unforeseen circumstances.



Getting Here

Address for your Sat Nav device:
Sheffield City Hall, Barkers Pool,
Sheffield S1 2JA

Parking

Parking in the City Centre surrounding the venue is very limited. Sheffield City Hall recommends Q Park on Rockingham Street/Portobello Street, S1 4NL, located a short five minute walk away.



35% off for Sheffield City Hall customers at Q Park Rockingham Street, Sheffield. Pre-book parking through the Q Park website enter the promocode: CITYHALL35

Bus

For details of the most suitable service from your area call the Traveline on **01709 51 51 51** or visit **www.travelouthyorkshire.com**

Stagecoach Supertram

Sheffield City Hall has a designated Supertram stop, named 'City Hall'.

Access Information

Passenger lifts are available providing access to all floors, including the downstairs City Bar, with toilet facilities available on all levels. Blind and Partially Sighted Assistance dogs are welcome in all areas of the building.

Wheelchair Users

Please inform the Box Office when booking if a member of your party is a wheelchair user so that an appropriate position can be allocated.

Hearing Impaired

An infrared sound amplification system is available in the Oval Hall on the Stalls, Circle and Balcony levels. Both loop and conventional headsets are available. Stethoset Receivers and Bodypack Receivers are also available. Devices can be requested via the Box Office and stewards are on hand to assist.

Alternative Formats

The Sheffield International Concert Season Brochure and Concert Programmes are available in large format print. Please contact the Box Office to order your copy.

Sheffield Philharmonic Chorus

2026-27 Season

Royal Philharmonic Society Inspiration Award 2024 nominee.
Patrons: Samuel West and Petroc Trelawny
Music Director: Darius Battiwalla

As South Yorkshire's foremost large mixed-voice chorus, the Chorus is proud to be Resident Chorus at the City Hall, performing alongside Orchestra in Residence the Hallé and acclaimed soloists as part of the Sheffield International Concert Season.

We're delighted to share our programme for 2026-27:

Sat 17 October 2026, all day event, Come and Sing Brahms A German Requiem, Upper Chapel, Norfolk Street

Discover the richness and humanity of Brahms' *A German Requiem* in our Come and Sing day. We invite choral singers to join us and explore this beautiful work in a powerful shared performance. We're excited to be using Brahms' own arrangement for four-hand piano accompaniment. Join us for a rare opportunity to perform this much-loved work in a new way.

Sat 5 December 2026, 7pm, with Manchester Camerata, Handel Messiah, Sheffield City Hall

We're delighted to return to Handel's *Messiah*, joining Manchester Camerata once again following last season's collaboration on Pärt's powerful *Adam's Lament*. Conducted by Laurence Cummings OBE, Music Director of the Academy of Ancient Music and one of Britain's leading Baroque specialists, this promises to be a stylish and colourful interpretation.

Sat 12 December 2026, 2.30pm, Christmas Concert, Sheffield City Hall

Celebrate the season at Sheffield City Hall with the Chorus, the world-renowned Black Dyke Band, and, for the first time, Sheffield Youth Choirs. Presented by BBC Look North's Amy Garcia, our Christmas Concert features a joyful mix of favourites including *Sleigh Ride*, *The Holly and the Ivy*, the lilting *Zither Carol* and Rutter favourite *Shepherd's Pipe Carol*.

Spring 2027

Keep an eye on our website for details of our 2027 Young Composer competition and an exciting future collaboration with City of Sheffield Youth Orchestra!

Sat 19 June 2027, 7pm, Orff Carmina Burana, Sheffield City Hall

Experience the full power and high energy of Orff's *Carmina Burana* with the Hallé at Sheffield City Hall, heard here for the first time in 20 years! We'll be joined by Hallé Children's Choir and an outstanding line-up of soloists, conducted by Matthew Hamilton. A thrilling live concert to bring the season to a spectacular close.

Love singing? Join Us!

The Chorus is a friendly choir that always welcomes new members in all voice parts, but especially tenors and basses. Prospective new members with some previous experience are invited to sing with us at our Tuesday evening rehearsals for a few weeks to see what it's like before auditioning. Contact 07771 578 233 or sing@sheffieldphil.org for details.

Book tickets now and find out more at www.sheffieldphil.org

Follow us on

X @sheffcityhall

Instagram @sheffieldcityhall



Sheffield City Hall

www.sheffieldcityhall.co.uk